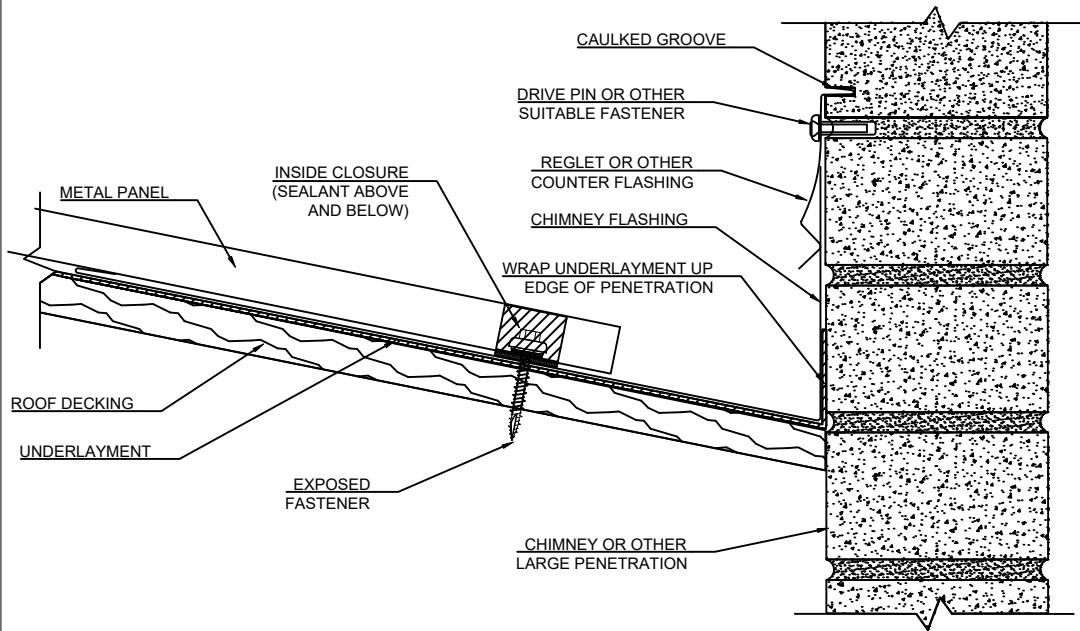


CHIMNEY FLASHING CROSS SECTION

NTS

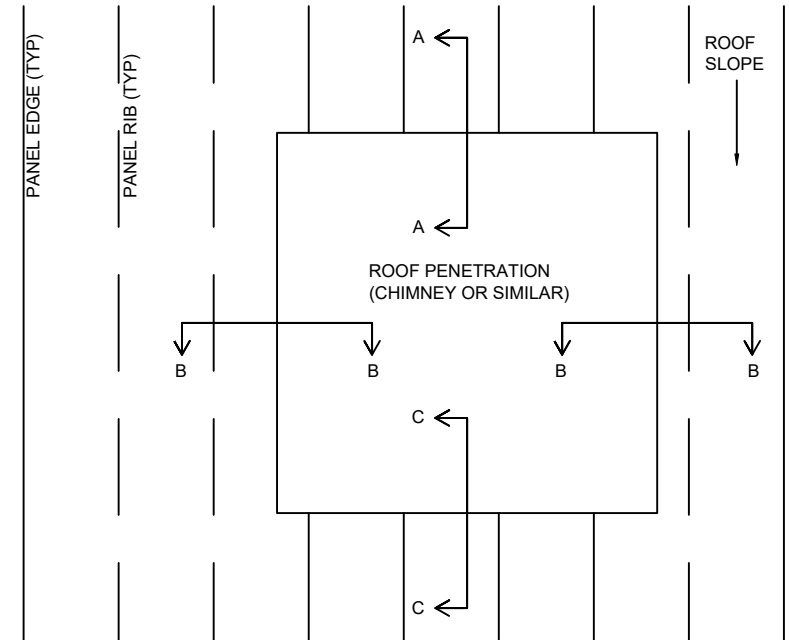
NOTES:
1. CHIMNEY FLASHING TRIM IS INTENDED TO FLASH AROUND CHIMNEYS AND LARGE PENETRATIONS. OTHER USE MAY BE ACCEPTABLE IF DESIGNER DETERMINES FITNESS OF USE.
2. THIS IS A GENERIC DETAIL FOR GENERAL PURPOSE USE. SPECIAL CONDITIONS MAY REQUIRE ALTERNATIVE DESIGN BY THE INSTALLER OR ARCHITECT/ENGINEER.
3. LARGE PENETRATIONS SUCH AS CHIMNEYS MAY REQUIRE CRICKETS OR OTHER DETAILING. CHECK WITH LOCAL BUILDING CODES.
4. USE SIDEWALL DETAILS FOR CHIMNEY SIDES AND ENDWALL DETAIL FOR DOWNHILL END OF CHIMNEY.



CHIMNEY FLASHING PLAN VIEW

NTS

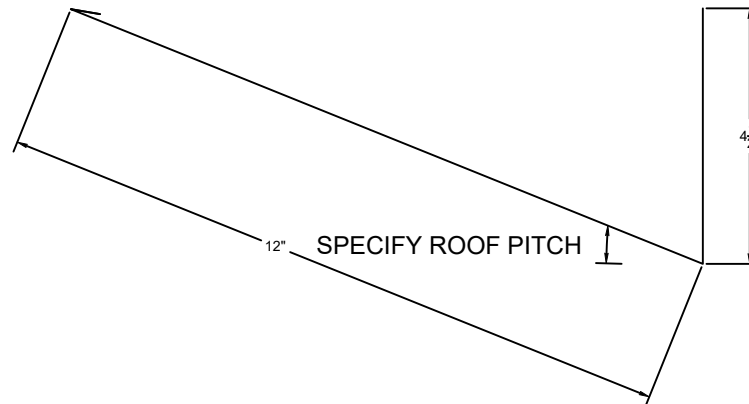
NOTES:
1. VIEW AA, CHIMNEY FLASHING CROSS SECTION.
2. VIEW BB, SIDE WALL CROSS SECTION, REGLET OPTION.
3. VIEW CC, END WALL CROSS SECTION, REGLET OPTION.
4. FLASH BEGINNING FROM DOWNHILL SIDE, OVERLAP SUCCESSIVE UPHILL FLASHING TO PROVIDE CONTINUOUS DRAINAGE PATH.



CH1 DIMENSIONS

NTS

NOTES:
1. USE DIMENSIONS SHOWN. DO NOT SCALE.
2. CH1 CAN BE USED WITH MOST PANEL PROFILES.



Details master.dwg

2/15/2017



EXPOSED FASTENER TRIMS

CHIMNEY FLASHING

GULF COAST SUPPLY & MFG., LLC
14429 SW 2ND PLACE, SUITE G30
NEWBERRY, FL 32669
352-498-0778 Fax 352-498-7852

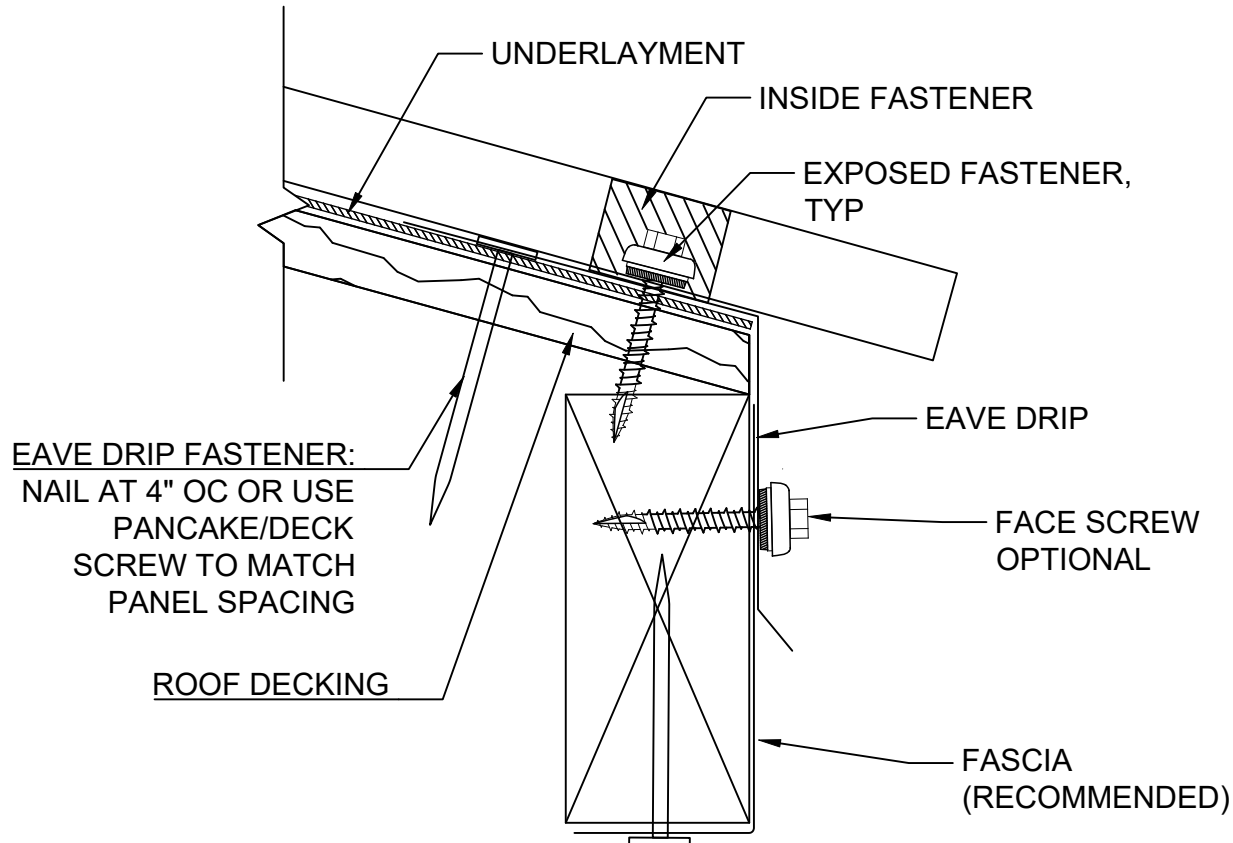
<http://www.gulfcoastsupply.com>

EAVE CROSS SECTION

NTS

NOTES:

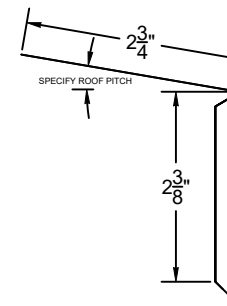
1. EAVE DRIP AND FASCIA ARE RECOMMENDED FOR USE AT ROOF EAVES. DIFFERENT STYLES OF EAVE DRIP ARE AVAILABLE SUBJECT TO DESIGNER'S SELECTION. OTHER USE MAY BE ACCEPTABLE IF DESIGNER DETERMINES FITNESS OF USE.
2. THIS IS A GENERIC DETAIL FOR GENERAL PURPOSE USE. SPECIAL CONDITIONS MAY REQUIRE ALTERNATIVE DESIGN BY THE INSTALLER OR ARCHITECT/ENGINEER.



ED1 DIMENSIONS

NTS

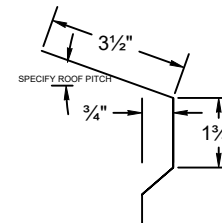
- NOTES:
1. USE DIMENSIONS SHOWN. DO NOT SCALE.



ED2 DIMENSIONS

NTS

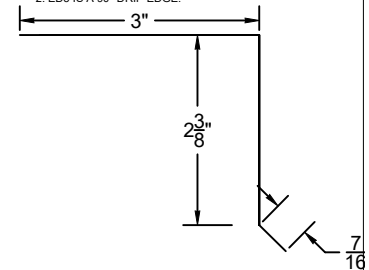
- NOTES:
1. USE DIMENSIONS SHOWN. DO NOT SCALE.
2. ED2 IS DESIGNED TO FIT OVER MOST ED1 STYLE EAVE DRIP.



ED3 DIMENSIONS

NTS

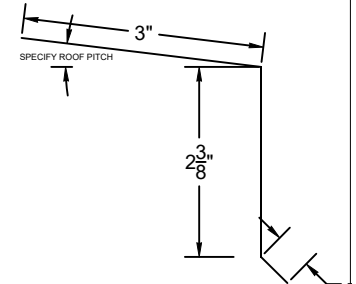
- NOTES:
1. USE DIMENSIONS SHOWN. DO NOT SCALE.
2. ED3 IS A 90° DRIP EDGE.



ED3P DIMENSIONS

NTS

- NOTES:
1. USE DIMENSIONS SHOWN. DO NOT SCALE.
2. ED3P IS FOR SLOPED ROOFS. SPECIFY PITCH OF ROOF FOR FABRICATION.

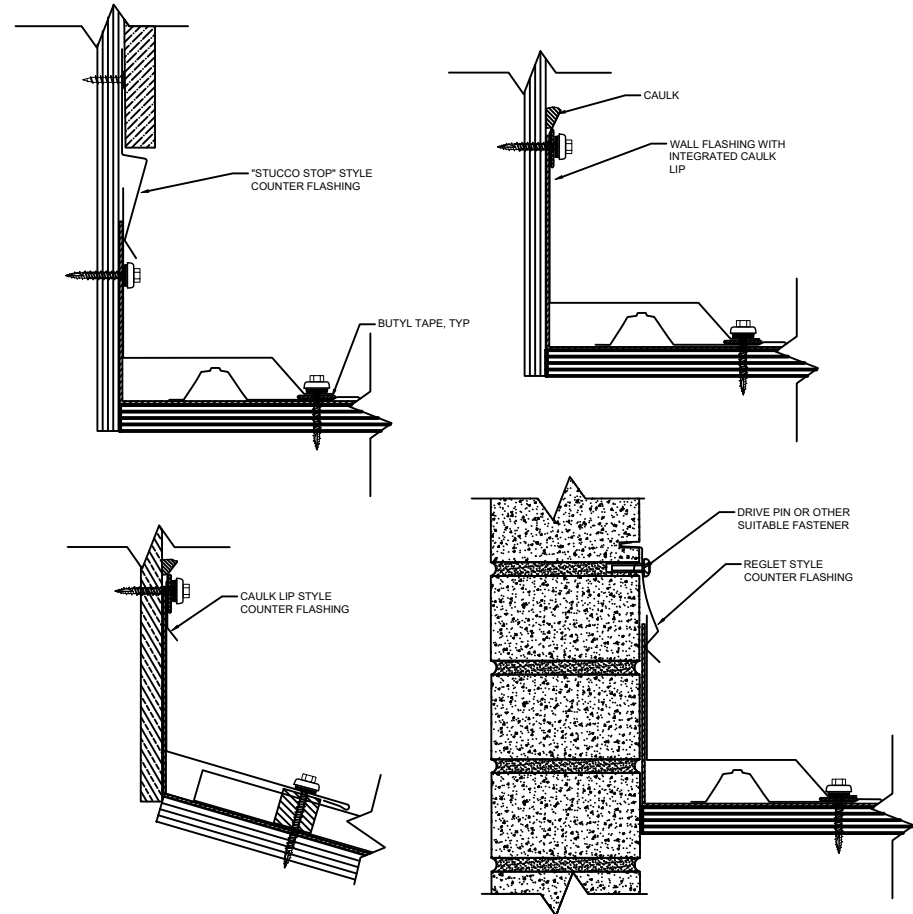
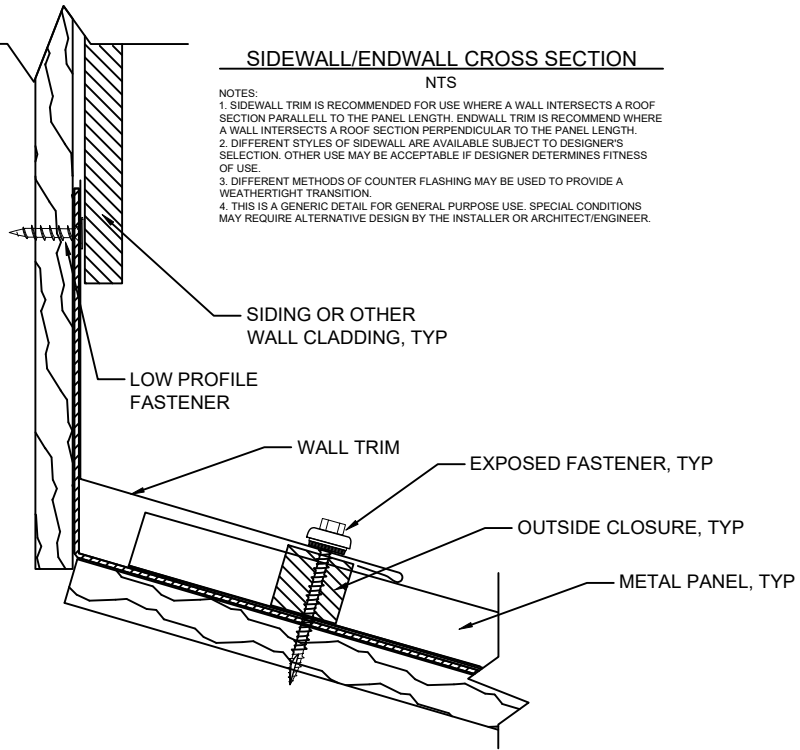


Details master.dwg

2/15/2017

SIDEWALL/ENDWALL CROSS SECTION NTS

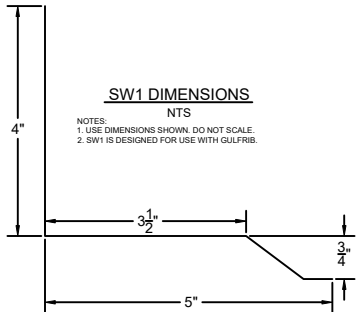
NOTES:
1. SIDEWALL TRIM IS RECOMMENDED FOR USE WHERE A WALL INTERSECTS A ROOF SECTION PARALLEL TO THE PANEL LENGTH. ENDWALL TRIM IS RECOMMENDED WHERE A WALL INTERSECTS A ROOF SECTION PERPENDICULAR TO THE PANEL LENGTH.
2. DIFFERENT STYLES OF SIDEWALL ARE AVAILABLE SUBJECT TO DESIGNER'S SELECTION. OTHER USE MAY BE ACCEPTABLE IF DESIGNER DETERMINES FITNESS OF USE.
3. DIFFERENT METHODS OF COUNTER FLASHING MAY BE USED TO PROVIDE A WEATHERTIGHT TRANSITION.
4. THIS IS A GENERIC DETAIL FOR GENERAL PURPOSE USE. SPECIAL CONDITIONS MAY REQUIRE ALTERNATIVE DESIGN BY THE INSTALLER OR ARCHITECT/ENGINEER.



SW1 DIMENSIONS

NTS

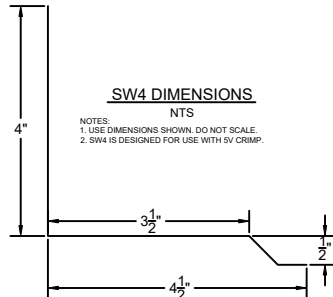
NOTES:
1. USE DIMENSIONS SHOWN. DO NOT SCALE.
2. SW1 IS DESIGNED FOR USE WITH GULFRIB.



SW4 DIMENSIONS

NTS

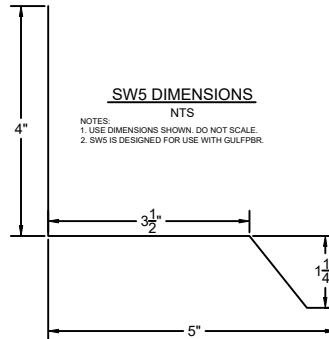
NOTES:
1. USE DIMENSIONS SHOWN. DO NOT SCALE.
2. SW4 IS DESIGNED FOR USE WITH SV CRIMP.



SW5 DIMENSIONS

NTS

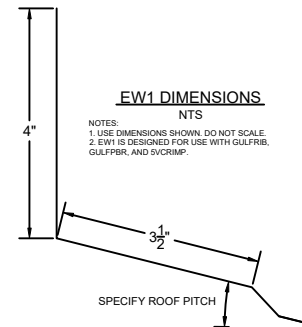
NOTES:
1. USE DIMENSIONS SHOWN. DO NOT SCALE.
2. SW5 IS DESIGNED FOR USE WITH GULFRIB.



EW1 DIMENSIONS

NTS

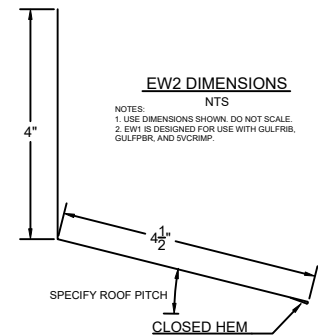
NOTES:
1. USE DIMENSIONS SHOWN. DO NOT SCALE.
2. EW1 IS DESIGNED FOR USE WITH GULFRIB, GULFPBR, AND SV CRIMP.



EW2 DIMENSIONS

NTS

NOTES:
1. USE DIMENSIONS SHOWN. DO NOT SCALE.
2. EW2 IS DESIGNED FOR USE WITH GULFRIB, GULFPBR, AND SV CRIMP.



Details master.dwg

2/15/2017



EXPOSED FASTENER TRIMS

SIDEWALL/ENDWALL

GULF COAST SUPPLY & MFG., LLC
14429 SW 2ND PLACE, SUITE G30
NEWBERRY, FL 32669
352-498-0778 Fax 352-498-7852

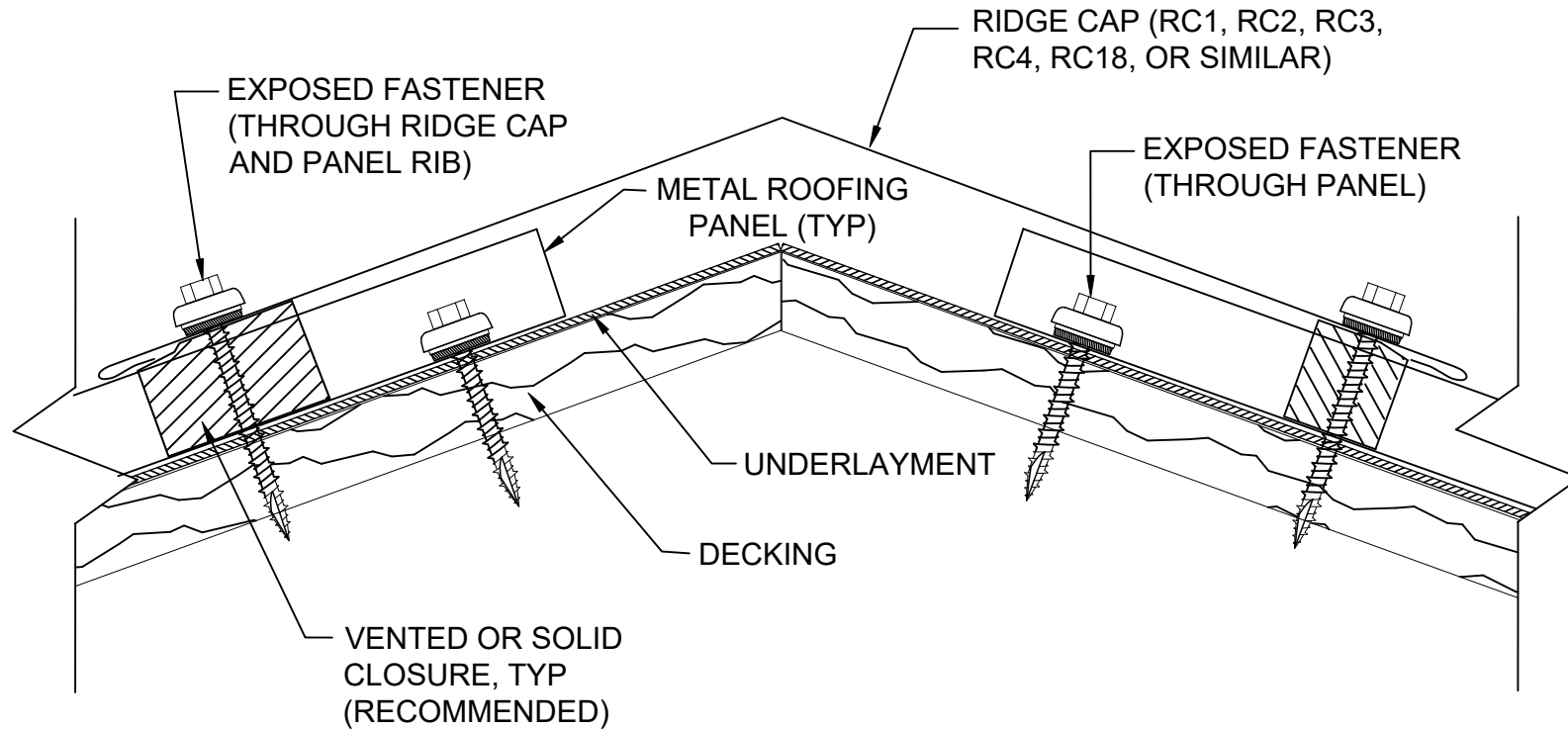
<http://www.gulfcoastsupply.com>

RIDGE CROSS SECTION

NTS

NOTES:

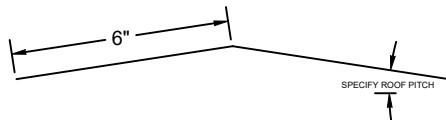
1. RIDGE CAP IS RECOMMENDED FOR USE AT ROOF EAVES. DIFFERENT STYLES OF RIDGE CAP ARE AVAILABLE SUBJECT TO DESIGNER'S SELECTION. OTHER USE MAY BE ACCEPTABLE IF DESIGNER DETERMINES FITNESS OF USE.
2. THIS IS A GENERIC DETAIL FOR GENERAL PURPOSE USE. SPECIAL CONDITIONS MAY REQUIRE ALTERNATIVE DESIGN BY THE INSTALLER OR ARCHITECT/ENGINEER.
3. "NOTCHABLE" RIDGE CAP (RC3 & RC4) IS DESIGNED TO BE FIELD NOTCHED SO THE NOTCHED RIDGE CAP PROVIDES CLOSURE OVER THE RIBS. RC3 IS DESIGNED FOR GULF RIB AND RC4 IS DESIGNED FOR 5V.
4. CLOSURES (SOLID OR VENTED) ARE RECOMMENDED TO PROVIDE CLOSURE OVER THE RIBS.
5. USE OF VENTED CLOSURE RECOMMENDED WHEN ROOF IS DESIGNED TO VENTILATE AT THE RIDGE.



RC1 DIMENSIONS

NTS

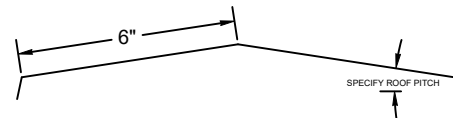
- NOTES:
1. USE DIMENSIONS SHOWN. DO NOT SCALE.



RC3/RC4 DIMENSIONS

NTS

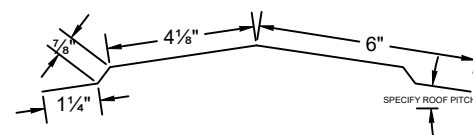
- NOTES:
1. USE DIMENSIONS SHOWN. DO NOT SCALE.
2. RC3 IS DESIGNED FOR GULF RIB, RC4 IS DESIGNED FOR 5V.
3. THE NOTCHABLE EDGE MUST BE CUT TO MATCH THE PROFILE OF THE PANEL



RC2 DIMENSIONS

NTS

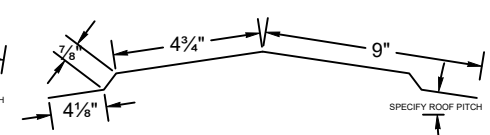
- NOTES:
1. USE DIMENSIONS SHOWN. DO NOT SCALE.



RC18 DIMENSIONS

NTS

- NOTES:
1. USE DIMENSIONS SHOWN. DO NOT SCALE.



Details master.dwg

2/15/2017



EXPOSED FASTENER TRIMS

RIDGE CAP

GULF COAST SUPPLY & MFG., LLC
14429 SW 2ND PLACE, SUITE G30
NEWBERRY, FL 32669
352-498-0778 Fax 352-498-7852

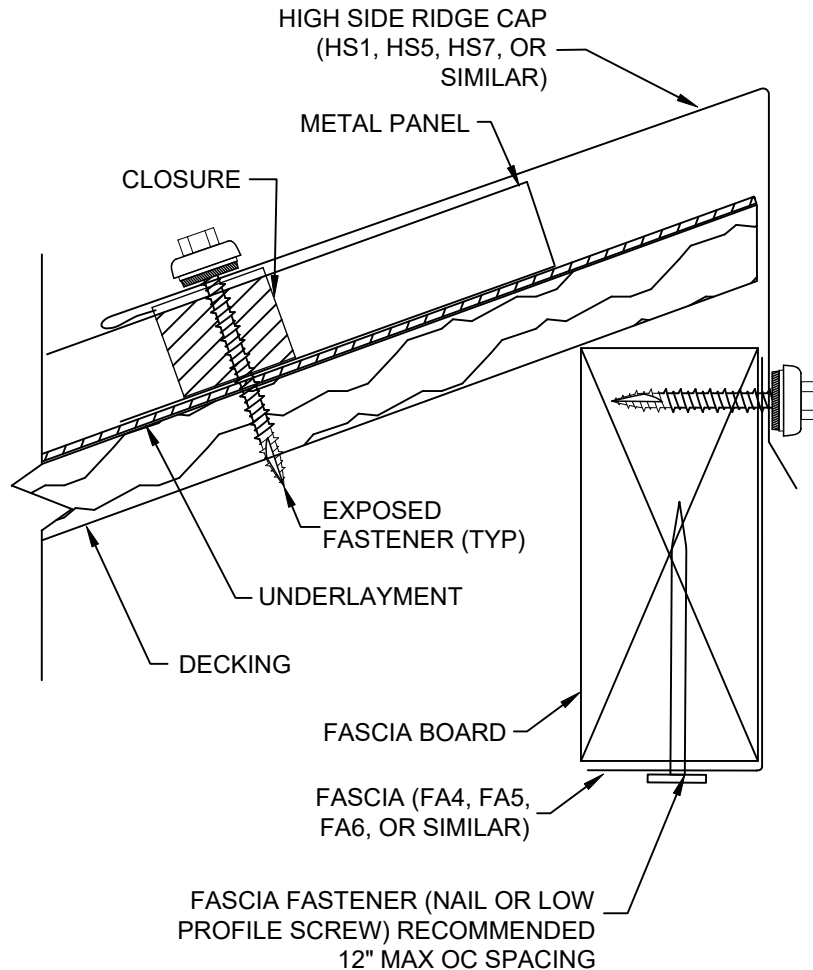
<http://www.gulfcoastsupply.com>

HIGH SIDE RIDGE CROSS SECTION

NTS

NOTES:

1. HIGH SIDE RIDGE CAP IS RECOMMENDED FOR USE AT THE RIDGE OF A MONOSLOPE ROOF. DIFFERENT STYLES OF RIDGE CAP ARE AVAILABLE SUBJECT TO DESIGNER'S SELECTION. OTHER USE MAY BE ACCEPTABLE IF DESIGNER DETERMINES FITNESS OF USE.
2. THIS IS A GENERIC DETAIL FOR GENERAL PURPOSE USE. SPECIAL CONDITIONS MAY REQUIRE ALTERNATIVE DESIGN BY THE INSTALLER OR ARCHITECT/ENGINEER.
4. CLOSURES (SOLID OR VENTED) ARE RECOMMENDED TO PROVIDE CLOSURE OVER THE RIBS.
5. USE OF VENTED CLOSURE RECOMMENDED WHEN ROOF IS DESIGNED TO VENTILATE AT THE RIDGE.

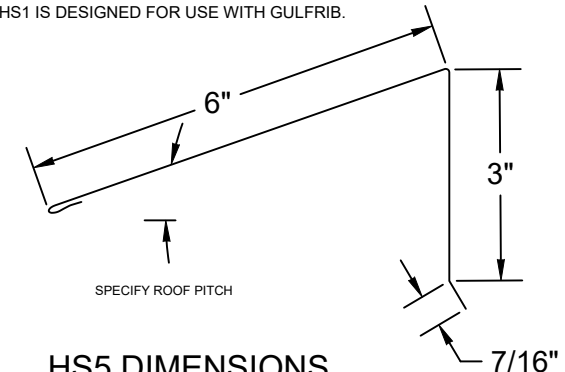


HS1 DIMENSIONS

NTS

NOTES:

1. USE DIMENSIONS SHOWN. DO NOT SCALE.
2. HS1 IS DESIGNED FOR USE WITH GULFRIB.

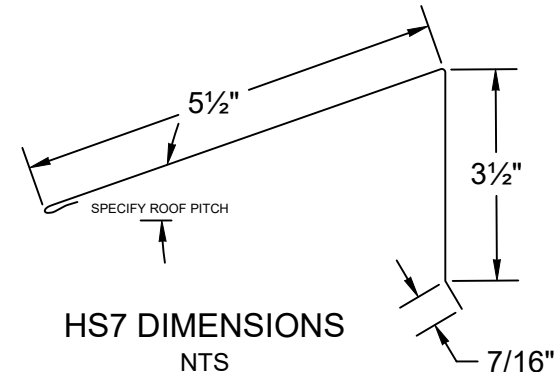


HS5 DIMENSIONS

NTS

NOTES:

1. USE DIMENSIONS SHOWN. DO NOT SCALE.
2. HS5 IS DESIGNED FOR USE WITH GULFPBR.

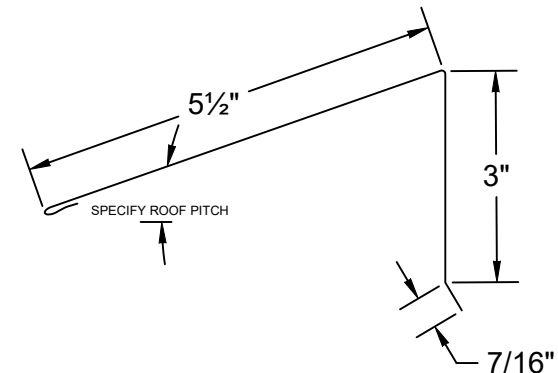


HS7 DIMENSIONS

NTS

NOTES:

1. USE DIMENSIONS SHOWN. DO NOT SCALE.
2. HS7 IS DESIGNED FOR USE WITH GULFLOK.



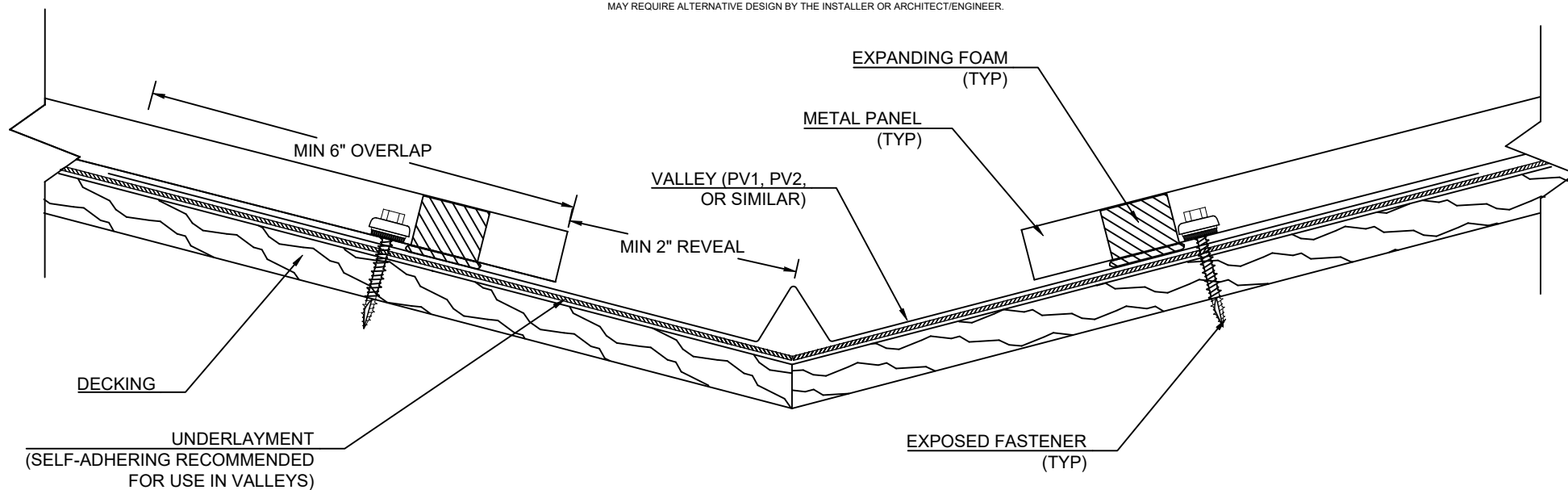
Details master.dwg

2/15/2017

VALLEY CROSS SECTION

NTS

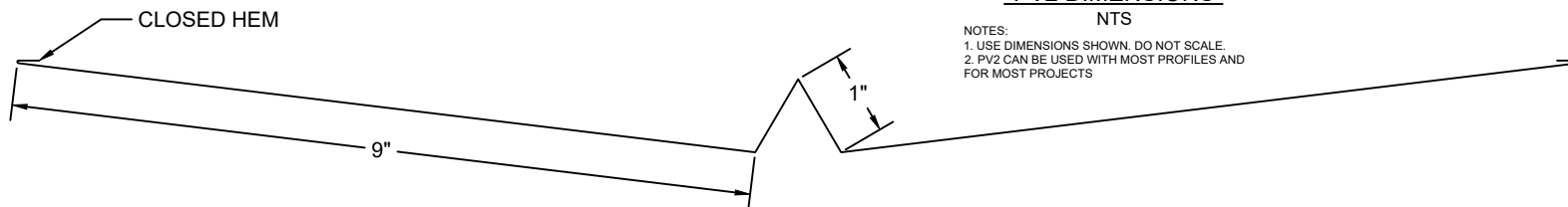
NOTES:
1. VALLEY FLASHING IS USED AT THE LOW POINT WHERE TWO ROOF SECTIONS MEET. DIFFERENT STYLES ARE AVAILABLE SUBJECT TO DESIGNER'S SELECTION. OTHER USE MAY BE ACCEPTABLE IF DESIGNER DETERMINES FITNESS OF USE.
2. THIS IS A GENERIC DETAIL FOR GENERAL PURPOSE USE. SPECIAL CONDITIONS MAY REQUIRE ALTERNATIVE DESIGN BY THE INSTALLER OR ARCHITECT/ENGINEER.



PV2 DIMENSIONS

NTS

NOTES:
1. USE DIMENSIONS SHOWN. DO NOT SCALE.
2. PV2 CAN BE USED WITH MOST PROFILES AND FOR MOST PROJECTS



Details master.dwg

2/15/2017



EXPOSED FASTENER TRIMS

VALLEY

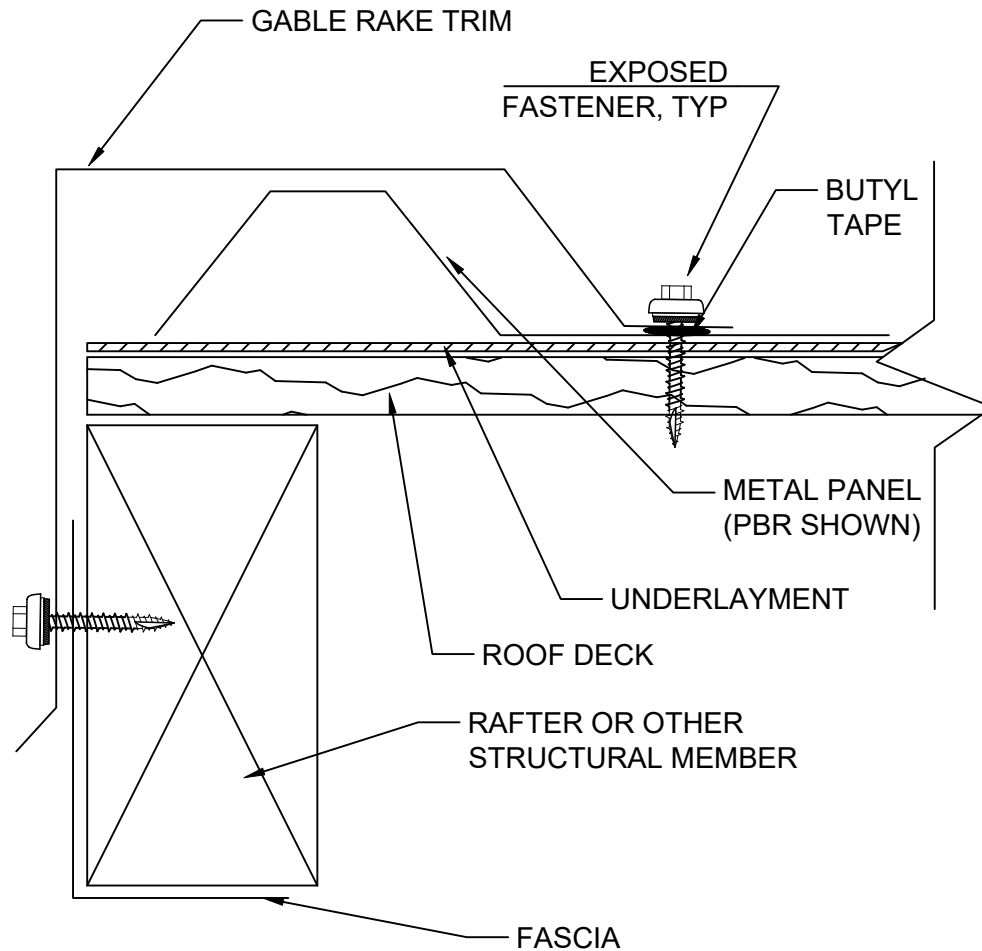
GULF COAST SUPPLY & MFG., LLC
14429 SW 2ND PLACE, SUITE G30
NEWBERRY, FL 32669
352-498-0778 Fax 352-498-7852
<http://www.gulfcoastsupply.com>

GABLE CROSS SECTION

NTS

NOTES:

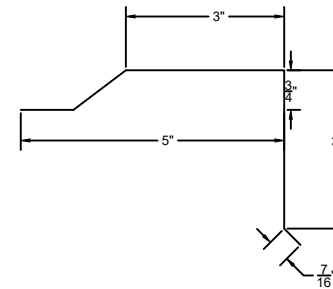
1. GABLE/RAKE TRIM IS USED WHERE THE ROOF TERMINATES AT A PANEL SIDE. DIFFERENT STYLES ARE AVAILABLE SUBJECT TO DESIGNER'S SELECTION. OTHER USE MAY BE ACCEPTABLE IF DESIGNER DETERMINES FITNESS OF USE.
2. THIS IS A GENERIC DETAIL FOR GENERAL PURPOSE USE. SPECIAL CONDITIONS MAY REQUIRE ALTERNATIVE DESIGN BY THE INSTALLER OR ARCHITECT/ENGINEER.



EF1 DIMENSIONS

NTS

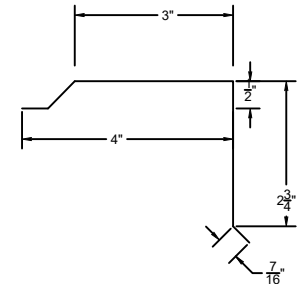
- NOTES:
1. USE DIMENSIONS SHOWN. DO NOT SCALE.
2. EF1 IS DESIGNED FOR USE WITH GULFRIE.



EF4 DIMENSIONS

NTS

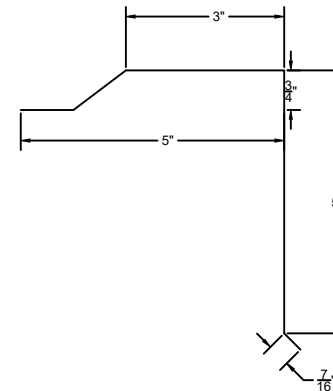
- NOTES:
1. USE DIMENSIONS SHOWN. DO NOT SCALE.
2. EF4 IS DESIGNED FOR USE WITH GULFRMP.



EF1B DIMENSIONS

NTS

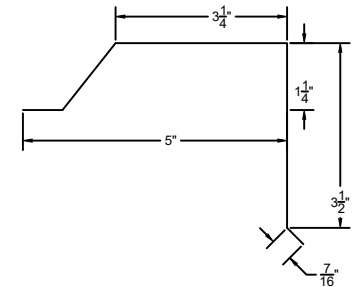
- NOTES:
1. USE DIMENSIONS SHOWN. DO NOT SCALE.
2. EF1B IS DESIGNED FOR USE WITH GULFRIB AND HAS A LONGER VERTICAL FACE FOR USE OVER BATTENS



EF5 DIMENSIONS

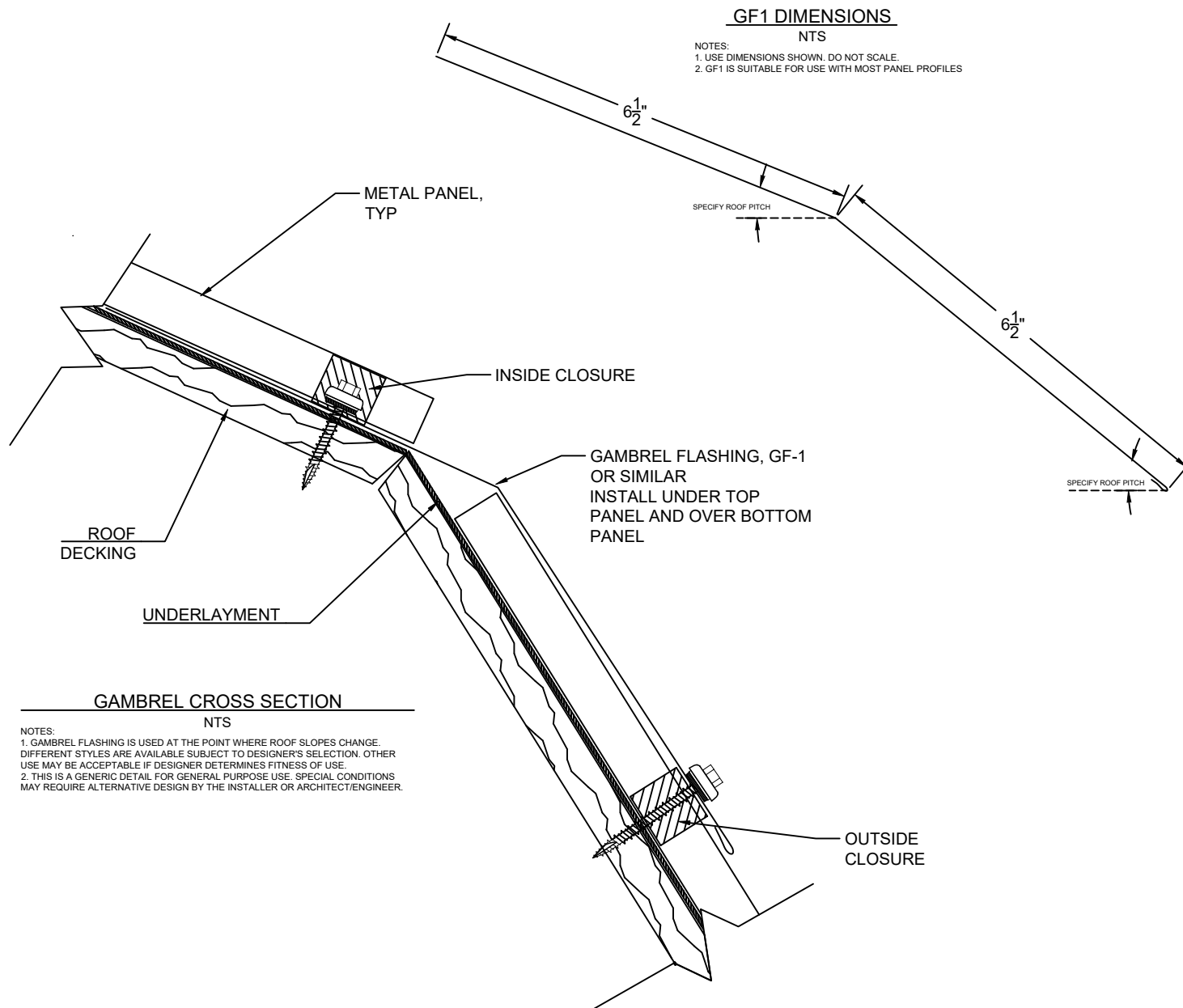
NTS

- NOTES:
1. USE DIMENSIONS SHOWN. DO NOT SCALE.
2. EF5 IS DESIGNED FOR USE WITH GULFRPB.



Details master.dwg

2/15/2017



Details master.dwg

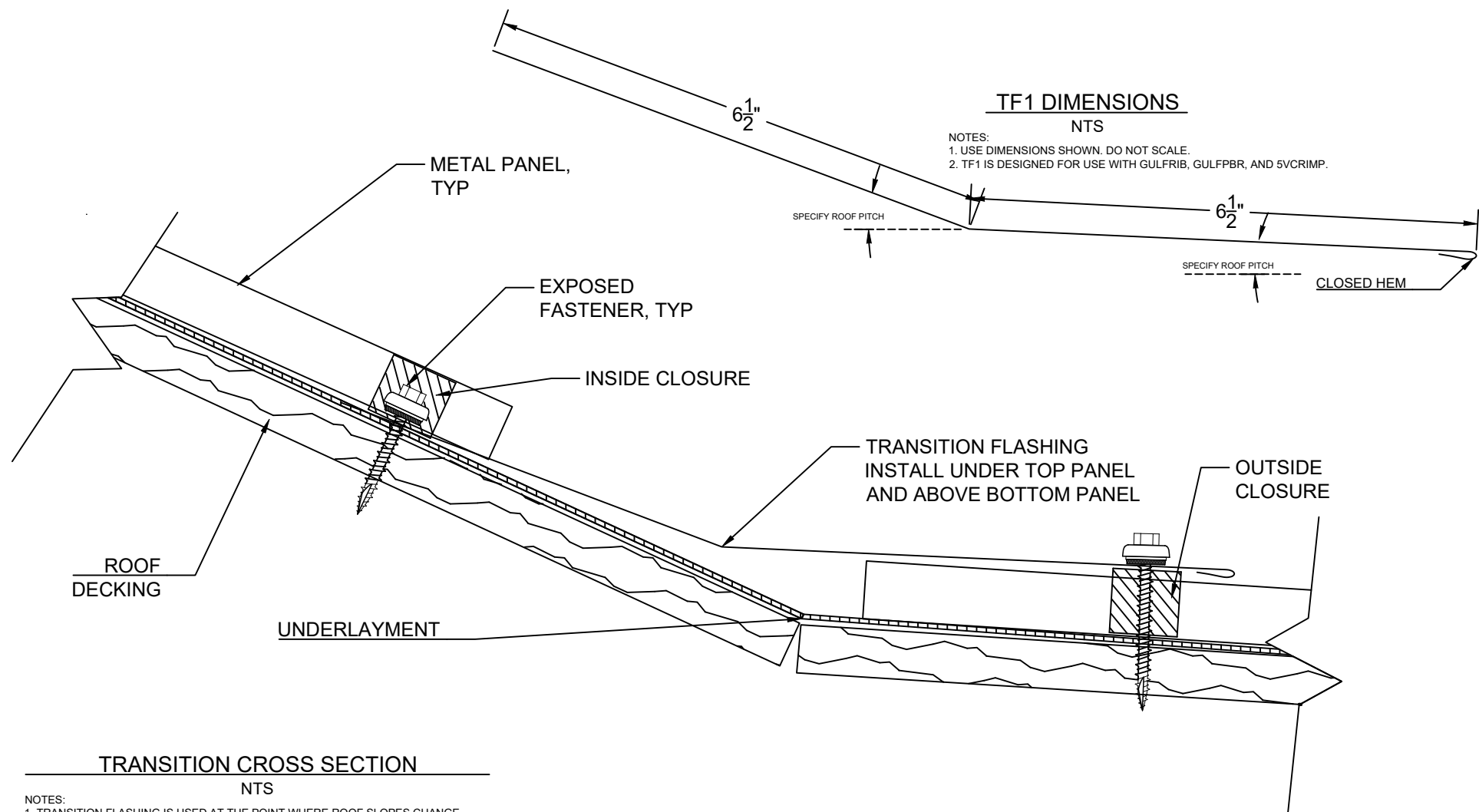
2/15/2017



EXPOSED FASTENER TRIMS

GAMBREL

GULF COAST SUPPLY & MFG., LLC
14429 SW 2ND PLACE, SUITE G30
NEWBERRY, FL 32669
352-498-0778 Fax 352-498-7852
<http://www.gulfcoastsupply.com>



NOTES:
1. TRANSITION FLASHING IS USED AT THE POINT WHERE ROOF SLOPES CHANGE. DIFFERENT STYLES ARE AVAILABLE SUBJECT TO DESIGNER'S SELECTION. OTHER USE MAY BE ACCEPTABLE IF DESIGNER DETERMINES FITNESS OF USE.
2. USE OF A LONGER TRANSITION FLASHING IS NECESSARY WHEN THE DIFFERENCE BETWEEN SLOPES IS SMALL.
3. THIS IS A GENERIC DETAIL FOR GENERAL PURPOSE USE. SPECIAL CONDITIONS MAY REQUIRE ALTERNATIVE DESIGN BY THE INSTALLER OR ARCHITECT/ENGINEER.

Details master.dwg

2/15/2017



EXPOSED FASTENER TRIMS

TRANSITION

GULF COAST SUPPLY & MFG., LLC
14429 SW 2ND PLACE, SUITE G30
NEWBERRY, FL 32669
352-498-0778 Fax 352-498-7852
<http://www.gulfcoastsupply.com>

VENT PIPE OR SIMILAR
PENETRATION

PIPE BOOT

FASTENER,
TYP

SEALANT BETWEEN PANEL
AND BASE OF PIPE BOOT

PANEL RIB, TYP

PIPE BOOT PLAN VIEW

NTS

NOTES:

1. PIPE BOOTS ARE DESIGNED TO FLASH AROUND PIPES AND SIMILAR PENETRATIONS.
2. TYPICAL INSTALLATION PROCESS: CUT OPENING OF PIPE BOOT TO FIT TIGHTLY AROUND PIPE. APPLY SEALANT TO BASE OF PIPE BOOT. SLIDE BOOT OVER PIPE. FORM TO ROOF PROFILE. FASTEN PIPE BOOT WITH FASTENERS AT 1-2" OC OR AS REQUIRED TO ENSURE TIGHT FIT. APPLY ADDITIONAL SEALANT AS REQUIRED.
3. WHENEVER POSSIBLE, PLACE THE PENETRATION IN THE CENTER OF THE PAN. IF PENETRATION MUST FALL ON PANEL RIB, PIPE BOOT MAY BE INSTALLED ON RIB. EXTREME CARE MUST BE EXERCISED TO ENSURE THE BASE OF THE PIPE BOOT HAS SUFFICIENT SEALANT, THAT THE BASE IS WELL FORMED TO THE RIB, AND THAT SUFFICIENT FASTENERS ARE USED TO MAINTAIN A WATERTIGHT SEAL. APPLY ADDITIONAL SEALANT AFTER INSTALLATION IF REQUIRED.
4. SIZE PIPE BOOT TO FIT THE PIPE/PENETRATION AND PANEL IN USE.
5. THIS IS A GENERIC DETAIL FOR GENERAL PURPOSE USE. SPECIAL CONDITIONS MAY REQUIRE ALTERNATIVE DESIGN BY THE INSTALLER OR ARCHITECT/ENGINEER.
6. IF CONSTRAINT OF THERMAL MOVEMENT IS A CONCERN FOR LONG PANEL RUNS, DESIGNER SHOULD CONSIDER INSTALL OPTIONS TO AVOID PINNING ROOF PANEL TO THE ROOF DECK.